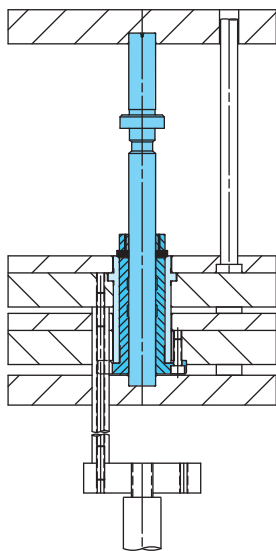


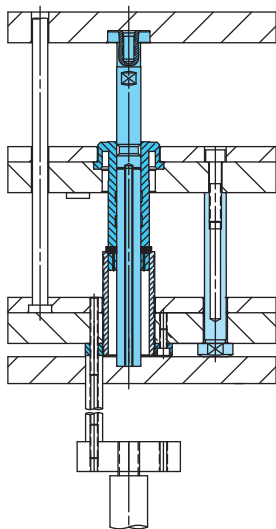
## Alternate Configurations System Configuration for Central Ejector Rod Location

The illustrations below show one 2-Stage Ejector assembly that has been centrally located on the ejector plates.

### TL Assembly

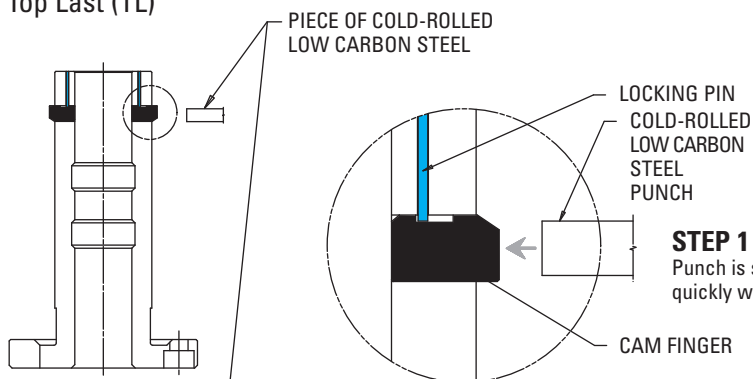


### BL Assembly



## TL & BL 2-Stage Ejectors – Cam Finger Removal Guide

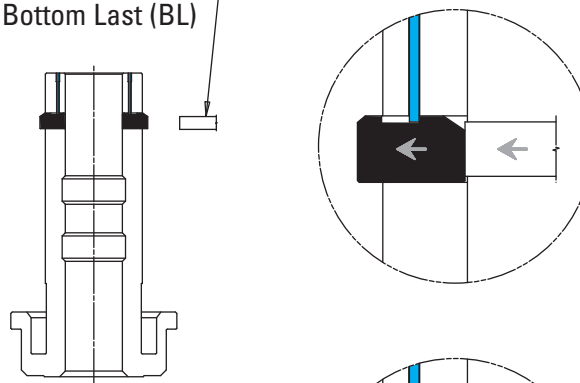
### Top Last (TL)



#### STEP 1

Punch is struck firmly and quickly with a hammer.

### Bottom Last (BL)

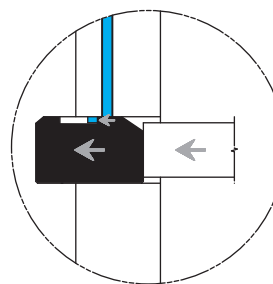


#### STEP 2

Cam Finger is knocked toward the inside diameter region of the Body for Cam Fingers. The Cam Finger pushes against the Locking Pin.

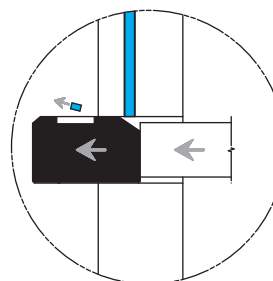
#### Notes:

- Cold rolled, low carbon steel must be used as a removal punch to avoid damaging the Cam Fingers and/or Body.
- The contact surface of the punch (where it rests against the Cam Finger) should be profiled with a curved surface that matches the exposed surface of the Cam Finger.
- Ensure that Body for Cam Fingers is firmly retained before attempting Cam Finger removal.



#### STEP 3

A portion of Locking Pin breaks cleanly away and travels with the moving Cam Finger toward the inside diameter of the Body for Cam Fingers.



#### STEP 4

Both the Cam Finger and broken piece of Locking Pin drop into the inside diameter of the Body for Cam Fingers.